



OPERATING MANUAL

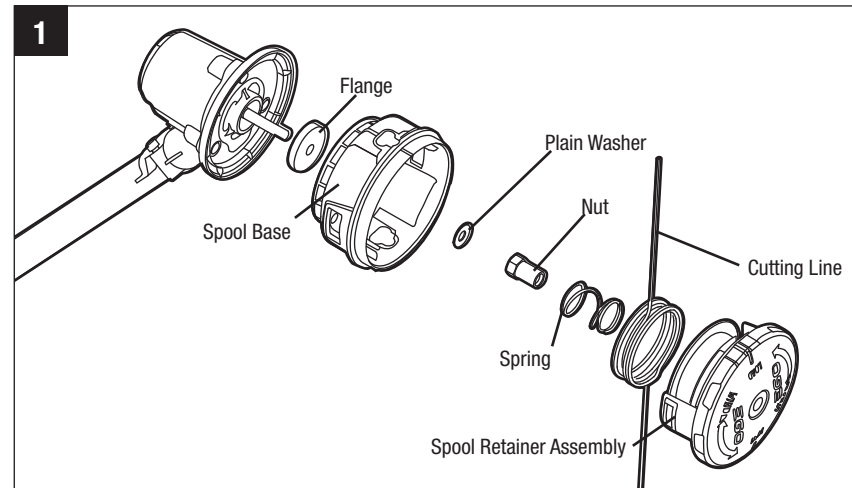
REPLACEMENT LINE TRIMMER HEAD

MODEL NUMBER AH1500

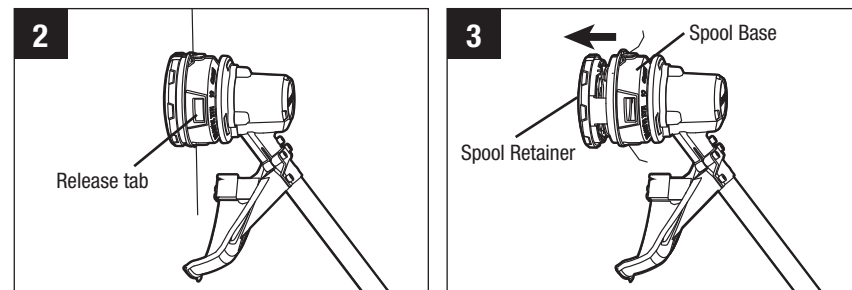
This Replacement Line Trimmer Head is exclusively compatible with EGO POWER+ Line Trimmer ST1500E-F & ST1502E-F.

DANGER: If the head loosens after it is fixed in position, replace it immediately. Never use a trimmer with a loose cutting attachment. Replace a cracked, damaged or worn out cutting head immediately, even if damage is limited to superficial cracks. Such attachments may shatter at high speed and cause serious injury.

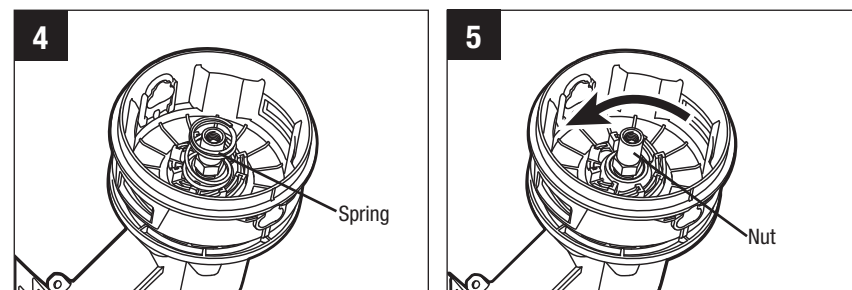
WARNING: Always remove the battery pack from the product when you are assembling parts, making adjustments, cleaning, or when the product is not in use.



Remove the trimmer head

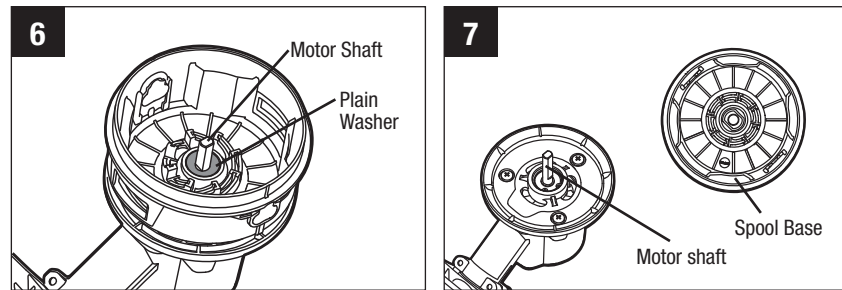


1. Press the 2 release tabs on the spool retainer to remove it (Fig. 2 & 3).
2. Pull the spring out of the spool base (Fig. 4).



3. Wear gloves to hold the spool base with one hand and, with the other hand, use an impact socket wrench (14mm) to loosen and remove the nut (Fig. 5).

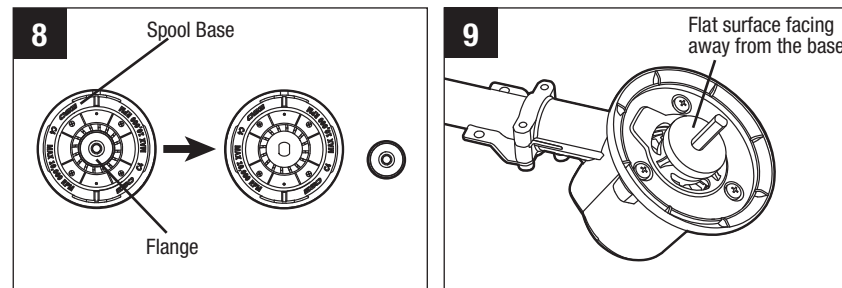
4. Remove the plain washer from the motor shaft and save it for reassembly (Fig. 6).
5. Hold the spool base and pull it straight out from the motor shaft (Fig. 7).



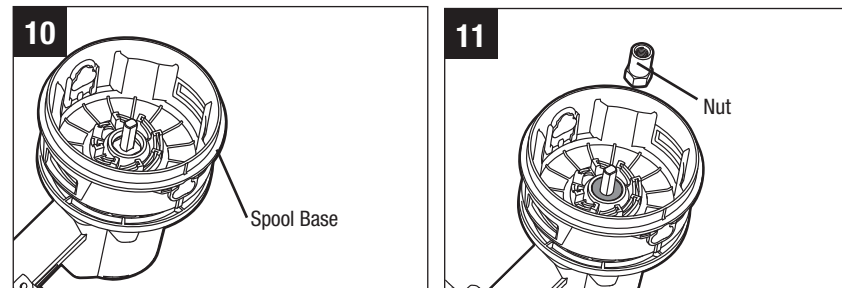
6. Remove the flange from the spool base and save it to secure the new spool base (Fig. 8).

Install the new trimmer head

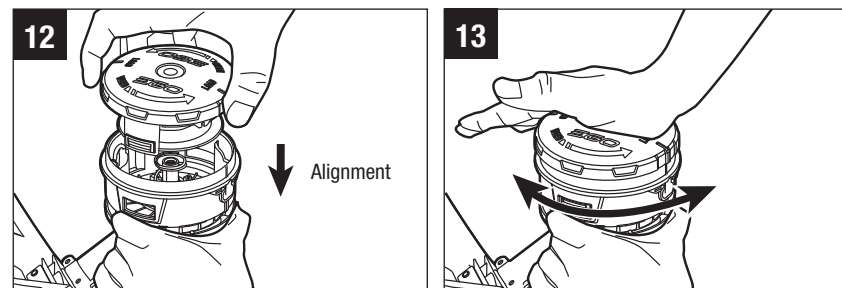
1. Position the flange removed in step 6 of the "Remove the trimmer head" section onto the motor shaft with the flat surface facing away from the base (Fig. 9).



2. Align the mounting hole in the spool base with the motor shaft and mount the base onto the shaft. (Fig. 10)
3. Position the plain washer onto the motor shaft (Fig. 6).
4. Mount the nut onto the shaft and turn it clockwise by hand to pre-tighten it (Fig. 11).



5. Wear gloves to hold the spool base with one hand and, with the other hand, use a socket wrench (14mm) to tighten the nut onto the shaft.
6. Fit the spring into the spool base and make sure it is pressed into position (Fig. 4).
7. With one hand holding the spool base, use the other hand to grasp the spool retainer and align the tabs on the spool retainer with the holes in the spool base. Use your palm to press and rotate the spool retainer left and right until the tabs lock with the spool base (Fig. 12 & 13).



8. If any parts of the spool retainer assembly are damaged or worn, replace the damaged part and reassemble them shown in Fig. 14.

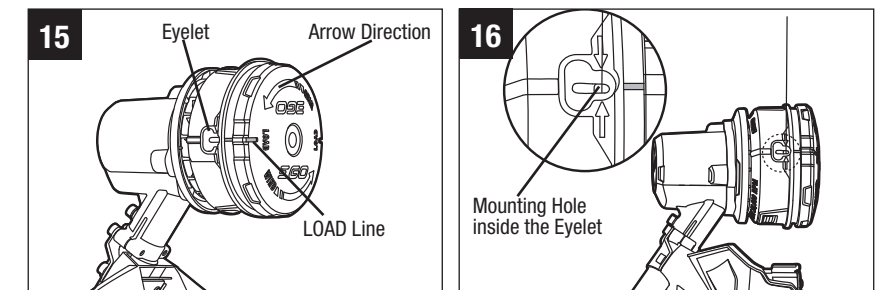
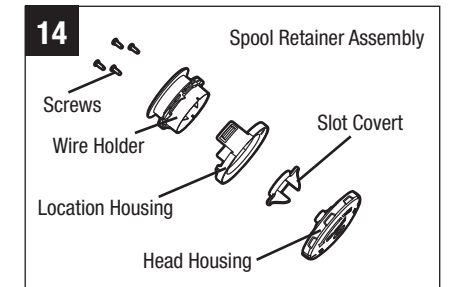
Wind the spool with new line

NOTICE: Always use the recommended nylon cutting line with a diameter that does not exceed 2.4 mm. Using line other than that specified may cause the Line trimmer to overheat or become damaged.

WARNING: Never use metal-reinforced line, wire, or rope, etc. These can break off and become dangerous projectiles.

WARNING: To prevent serious personal injury, remove the battery pack from the tool before servicing, cleaning, changing attachments or removing material from the unit.

1. Remove the battery pack.
2. Rotate the spool retainer in direction indicated by the arrow as necessary to align the LOAD line on the spool retainer with the eyelets in the spool base (Fig. 15).
3. Cut one piece of cutting line 5m long. Insert the line into the mounting hole, which is located inside the eyelet. Push until the end of the line comes out of the other side of the spool base. Pull the line from the other side until equal amounts of line appear on both sides of the spool (Fig. 16).



4. Rotate the spool retainer in the direction of the arrow to wind the line onto the spool until approximately 14 cm of line is showing on each side (Fig. 17).
5. Push the spool retainer down while pulling on lines to manually advance the line and to check for proper assembly of the trimmer head.

