



POWER+ LINE TRIMMER

## OPERATING MANUAL

# REPLACEMENT LINE TRIMMER HEAD

MODEL NUMBER AH1200E

This Replacement Line Trimmer Head is exclusively compatible with EGO POWER+ Line Trimmer ST1200E.

**⚠ WARNING:** To prevent serious personal injury, remove the battery pack from the tool before servicing, cleaning, changing attachments or removing material from the trimmer.

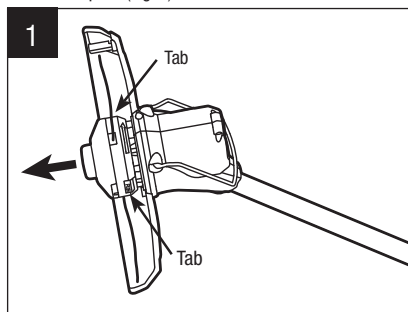
**⚠ WARNING:** When servicing, use only identical EGO replacement parts. Use of any other accessory or attachment may increase the risk of injury.

**⚠ WARNING:** Replace a cracked, damaged or worn-out trimmer head immediately, even if damage is limited to superficial cracks. Such attachments may shatter at high speed and cause serious or fatal injury.

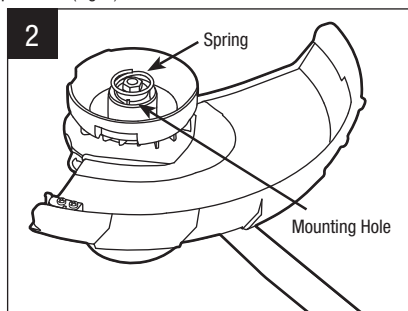
## HOW TO REPLACE THE LINE TRIMMER HEAD

### REMOVE THE WORN LINE TRIMMER HEAD

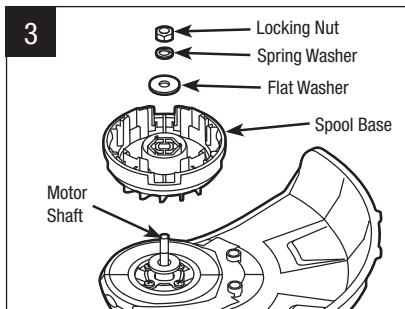
1. Press the release tabs on the spool retainer and remove the retainer and spool. (Fig. 1).



2. Pull the spring upward to remove it from the mounting hole in the spool base (Fig. 2).

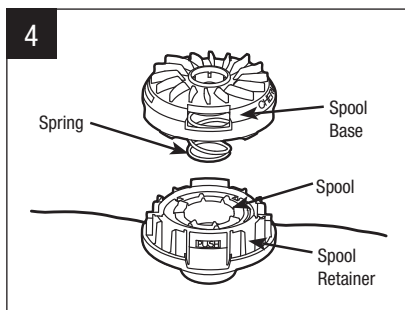


3. With one hand holding spool base, use a 13mm socket wrench to loosen the locking nut (Fig. 3).
4. Remove the locking nut, spring washer and spool base from the motor shaft (Fig. 3).

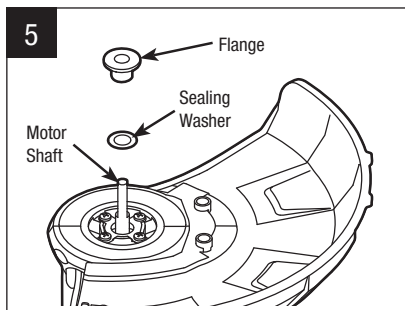


### INSTALL NEW LINE TRIMMER HEAD

1. Press the release tabs on the new spool retainer and remove the spool retainer and spool (Fig. 4).

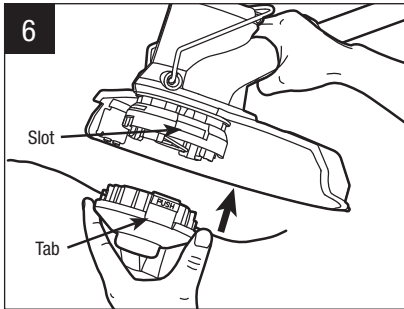


2. Remove the spring from the spool base.
3. Place the sealing washer and flange onto the motor shaft as shown in Fig. 5.

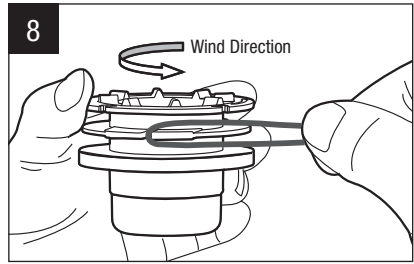


4. Position the spool base, flat washer and spring washer onto the motor shaft; then hand-tighten the nut clockwise on the shaft (Fig. 3).
5. With one hand holding spool base, use a 13mm socket wrench to tighten the nut clockwise;
6. Position the spring in the mounting hole of the spool base and press it in place (Fig. 2).

- With the spool base facing downward, align the tabs on the spool retainer with the slots in the spool base and press the retainer down until it snaps into place (Fig. 6).

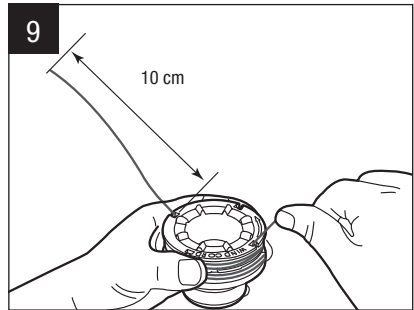


- Hook the folded end of the cutting line onto either of the slots in the spool (Fig. 8).
- Wind the line, in two even and tight layers, onto the spool. Wind the line in the direction indicated on the spool (Fig. 8).

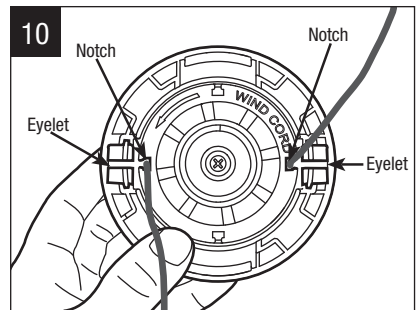


**NOTICE:** Failure to wind the line in the direction indicated will cause the bump head to operate incorrectly.

- Place the ends of the line in two opposite notches in the spool, with approximately 10cm protruding (Fig. 9).



- Align the notches of the spool from which the lines protrude with the eyelets in the spool retainer and position the spool in the retainer (Fig. 10).



#### Need Help?

For all enquiries, please call EGO Customer Service on 1300 000 EGO (1300 000 346)

[EGOPOWERPLUS.COM.AU](http://EGOPOWERPLUS.COM.AU)

## LINE REPLACEMENT

**⚠ WARNING:** Always use only EGO authorized replacement nylon cutting line. Using line other than that specified may cause the line trimmer to overheat or become damaged.

**⚠ WARNING:** Never use metal-reinforced line, wire, or rope, etc. These can break off and become dangerous projectiles.

There are two methods to replace the cutting line:

- Wind the spool with new line.
- Install a pre-wound spool.

### WIND THE SPOOL WITH NEW LINE

**⚠ WARNING:** To prevent serious personal injury, remove the battery pack from the tool before servicing, cleaning, changing attachments or removing material from the unit.

- Press the release tabs on the spool retainer and remove the spool retainer by pulling it straight out (Fig. 1).

- Remove the spool. Use a clean cloth to clean the inner surface of the spool base.

**NOTICE:** Always clean the spool and spool base before reassembling the bump head.

- Check the spool retainer, spool and spool base for wear. If necessary, replace the wear parts.
- Take approximately 5m of new cutting line. Fold the line in half and adjust it so that one end is 10cm longer than the other (Fig. 7).

